



河南工程学院
HENAN UNIVERSITY OF ENGINEERING

**Annual Report on Teaching Quality Monitoring of Henan
University of Engineering**

2016-2017

.....	1
.....	2
.....	2
.....	2
.....	4
.....	4
.....	5
.....	5
.....	5
.....	6
.....	7
.....	7
.....	8
.....	8
.....	9
.....	9
.....	10
.....	11
.....	12
.....	13
.....	14
.....	14
.....	15
.....	15
.....	17
.....	19

.....	20
.....	20
.....	21
.....	21
.....	22
.....	22
.....	23
.....	24
.....	24
.....	24
.....	24
.....	25
.....	25
.....	27
.....	27
.....	

2016

2016 6

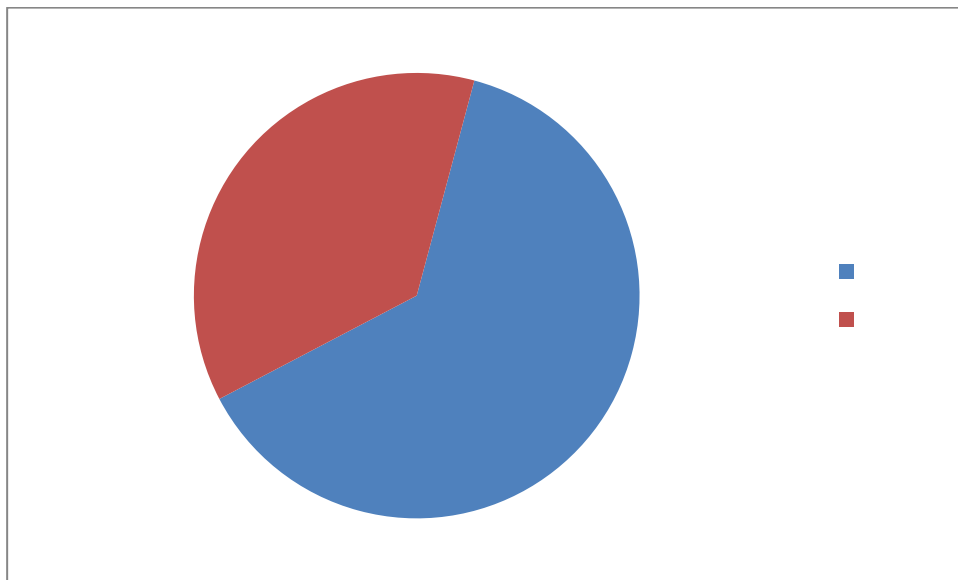
543

				28	58%
	3	6%		2	4%
17%		1	2%	6	13%

1

	28	58%	
	3	6%	
	2	4%	
	8	17%	
	1	2%	
	6	13%	

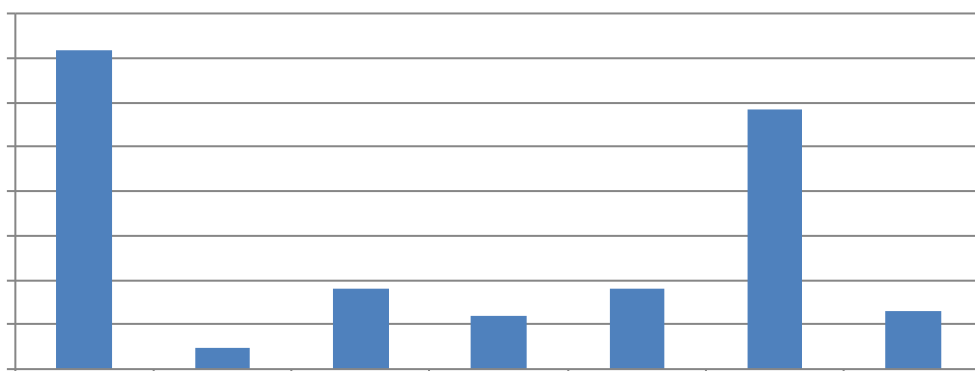
	2016	9	30		26947
17018		9929			63.15%



1

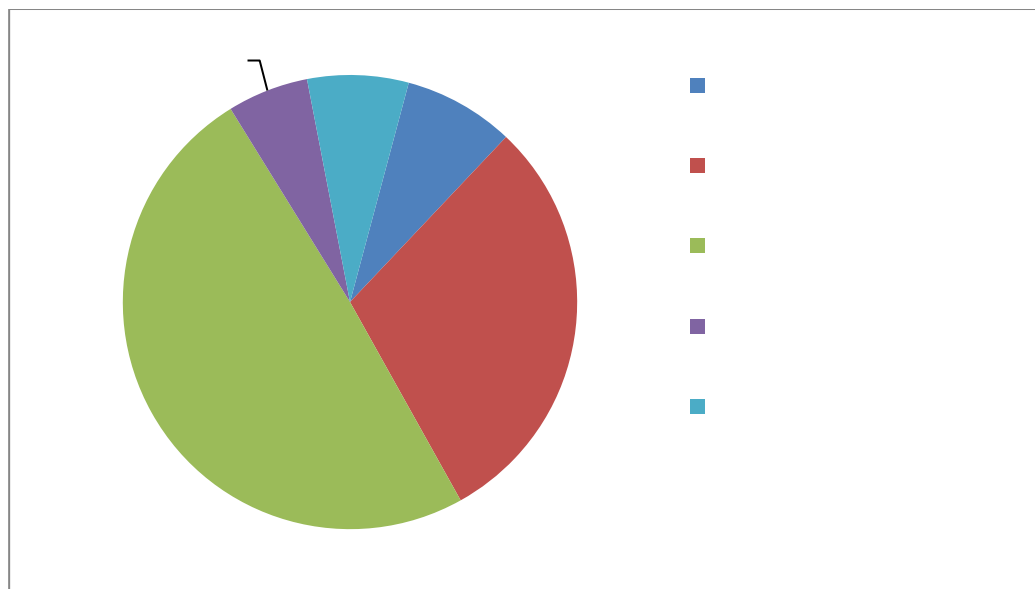
2016	27	4240	711
	2016	26	
		100%	
480	33	485	
27		100%	96.97%

2016	9	30	1432	98
365		238	365	1169
260			27053	20.83:1



		1		1	
2		16		1	
7		2		2	
	5		43		2
	16		43		

2016-2017			4693	370
	1401		2313	271
		338	2016-2017	
84			70.83%	



3

2016

8099.60

5904.54

72.9%

2

	5904.54	72.90%
	22.01	0.27%
	464.59	5.74%
	579.90	7.16%
	330.20	4.08%
	249.70	3.08%
	99.16	1.22%
	326.70	4.03%
	702.70	8.68%
	8,099.60	100.00%

	2016-2017		175.31		65.82
	88.51			37.18	
	16.12		431		352
38917	16.62				9.8
		13.52			76
			226		2
1.4					
			3.5		227.4715
		3451	68		CNKI
ACM	ACS	IEL		WGSN	
SAGE			TTC		30
		4194	2016-2017		123930
4.42		81.22			
7	30	22:00		101.5	24
		1200			
			QQ		

			2017	8
	22.96	1000		2.75
2016		2320.86		
	12553	11211		

CERNET2 4 6000M

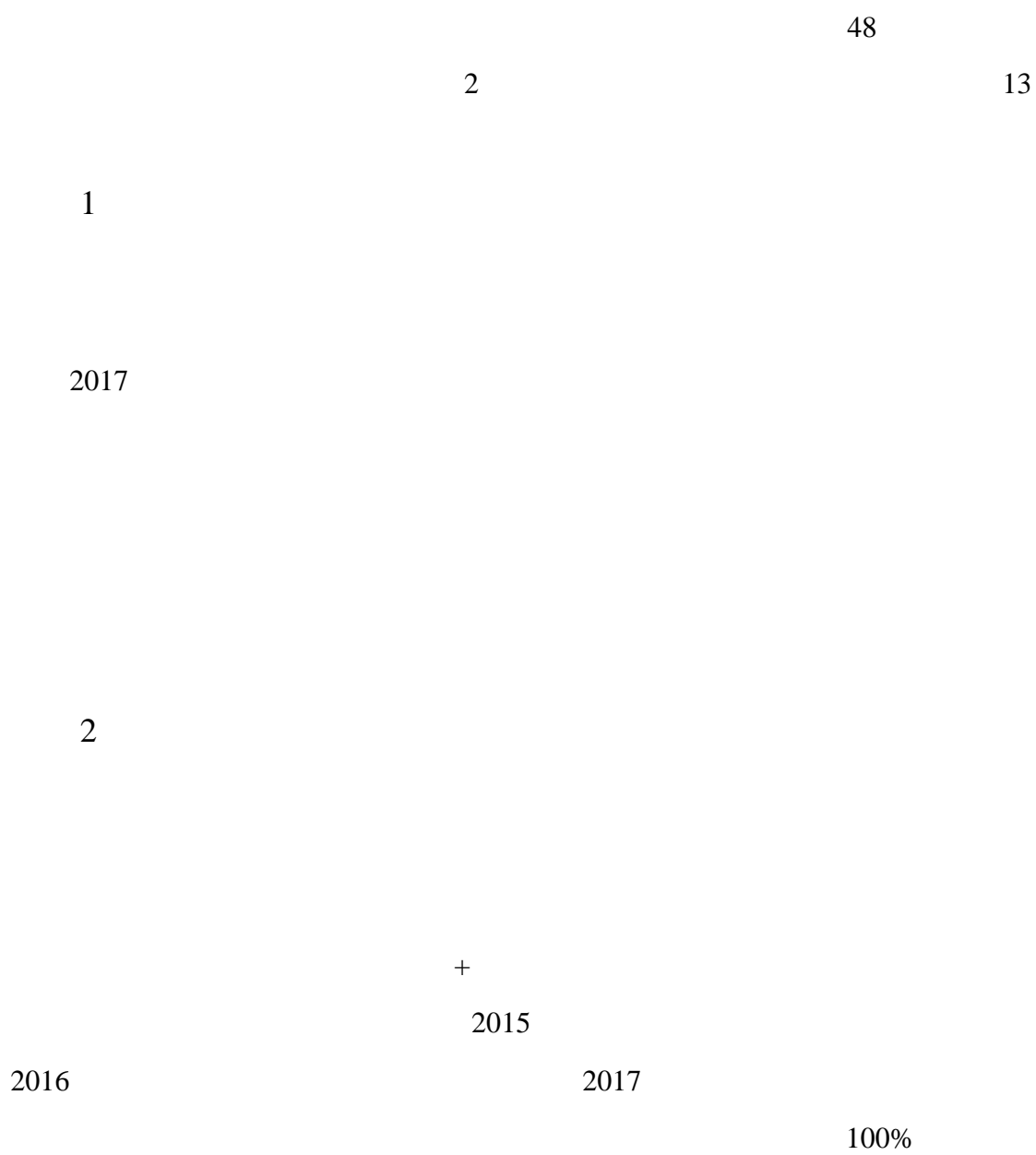
IPV4/IPV6

80

OA

15

59



2017

128

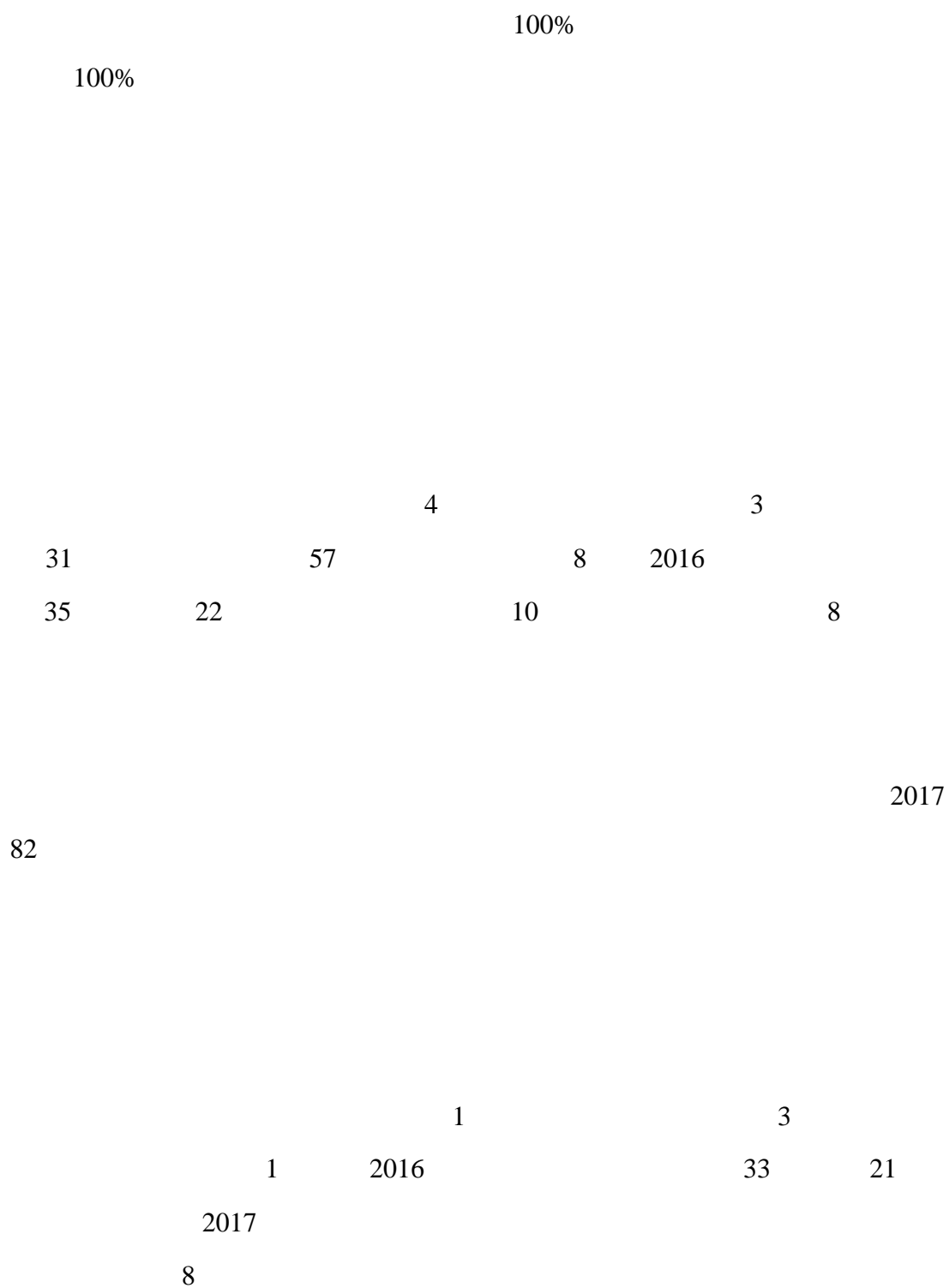
210

3

+

4

2016-2017



2017

2017

2016-2017

4

6

1		
2		
3		
4		

2016-2017

8

3

64

28

2

33

1

16

					24	6
					7	4
2017						
	5		1			
2016-2017						
	543					
2016-2017					252	
	14		124		114	
	5			1		1
		1		691		
				4	2017	
2016-2017					169	
	13		156		26	4
	22			12		147
SCI43	EI49	ISTP19	CSCD55	CSSCI27		
200		76		3		311
	26	219		66		
2017						
			543			8

	2015	2017
		30%
2016-2017	1411	4693
76	42	
	2015	

	2016-2017		507
		2016-2017	1168
1168	100%		2016-2017
		362	73.1
			136
			2017
			2016-2017
81.77%	2017	595	7.38
	2017		2017
89.24%			

5 2017

1		136	136
2		190	190
3		122	0
4		52	38
5		71	71
6		77	77
7		117	110
8		73	31
9		82	59
10		111	58
11		185	185
12		119	119
13		86	82
14		132	122
15		138	117
16		20	20
17		78	68

18

30		56	29
31		95	92
32		246	238
33		265	260
34		107	107
35		122	75
36		81	81
37		69	60
38		160	125
39		102	70

1
 2016-2017
 80
 2016-2017
 13
 3 4 1 2016
 1
 2
 2017 3
 2015

2017 6

2017

2017

4

2016

34

2017

4

6

3

4

2100

44

40

20

15

2016

4

,

2016 7

+

5

2017 4

BELP

2016

2015 2017

1234

2016

543

2016-2017

2017 4

2016-2017

C

2016-2017

3100

200

300

2016 9 10

2016-2017						
	23					
5088	4786			4616		95.07%
	2016-2017					
97.70%	4585			90	3338	
71.13%	81-90	892	19.01%	71-80	247	5.26%
2017		4406	2017	8	4287	
		97.30%				
			4209			
		95.53%				
2017		490				
11.4%	6		213	985	211	
			28.6%			27.8%
		19.3%		28.8%		9.4%

2017 4406 2017 9 1
 3892 88.33% 2017 12 12 2017
 91.02% 2017 53.04%
 64.73%
 “ “
 ”

6

	3892	88.33%
	471	10.56%
	1	0.02%
	2	0.05%
	11	0.25%
	0	0
	0	0

2017

406

273 67.24% 96.18%

7

1		177	65.31%	87	32.10%	7	2.58%	0	0.00%
2		208	76.19%	58	21.25%	7	2.56%	0	0.00%
3		205	75.09%	62	22.71%	6	2.20%	0	0.00%
4		171	62.87%	87	31.99%	14	5.15%	0	0.00%
5		174	63.74%	90	32.97%	9	3.30%	0	0.00%

6		167	63.74%	83	31.68%	12	4.58%	0	0.00%
7		149	54.78%	104	38.24%	19	6.99%	0	0.00%
8		163	61.98%	82	31.18%	18	6.84%	0	0.00%
9		170	62.27%	97	35.53%	6	2.20%	0	0.00%
10		169	64.50%	88	33.59%	5	1.91%	0	0.00%
		1753	65.07%	838	31.11%	103	3.82%	0	0.00%

1

IT 95%
IT 100

EPM

4000—7000

1.6

53101

2 N

N

“

”

1093

897

GIS 30

600

218

3

1

35%

30%

4

1+N

N

200

40

100

5

PPT

